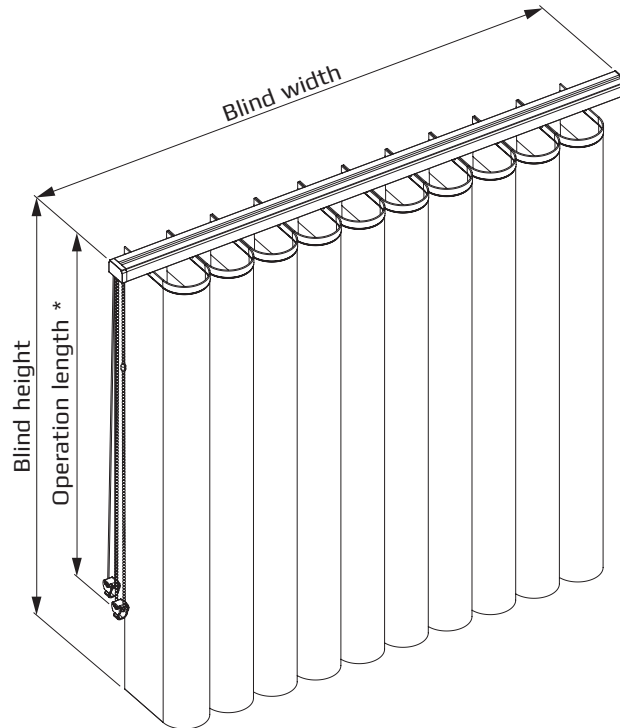


DS010 - Operable curtain made of free-hanging fabric slats



*** Child safety:**
for further
informations
please refer
to page 6

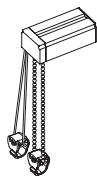
- Dimensions/Measures**
- **Blind width** : max. 6.00 m (Rail length incl. end caps)
 - **Blind height** : max. 3.00 m (Upper edge of end cap to lower edge of fabric)
 - **Fabric** : max. 18.00 m²
 - **Fabric weight** : max. 20.00 kg (Chain/cord and motor)
max. 10.00 kg (Traversing wand)

- Gear/Hardware**
- **Operable curtain made of free-hanging fabric slats**
Fabric slats with 2 welded-in slat holders (PC - polycarbonate).
Slat width: 40 - 41 cm
180° turn of the fabric slats.
This allows the curtain to be variably adjusted in terms of visibility.
The curtain can be operated using a chain and cord, traversing wand or motorised control and can be moved to the left, right or split into a package.
 - **Functional rail** (40 x 25 mm, max. length 7.00 m) is made of extruded aluminium (Al Mg Si 0.5 F22), powder-coated in white structure (RAL 9016), grey structure (RAL 7040), black structure (RAL 9005) and anthracite structure (RAL 7016).
 - **Shaft** (Ø6.0 mm) is made of extruded aluminium (Al Mg Si 0.5 F22).
Torsion-proof grooved shaft, stabilization by stationary shaft support.
 - **Double traveller** with cantilever/stabiliser.
Wear-resistant plastic (polyacetal), roller bearings, integrated safety clutch, self-lubricating for life.
Subsequently replaceable slat hooks (polycarbonate).
Stainless steel spacer (material 1.4310).
Sliding traveller package for window cleaning.
 - Visible **Plastic parts** are matching the colour of the track in grey, white, brown and black.

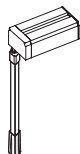
- Bedienung**
- **Chain/cord, traveller wand or motorised operation**

DS010 - Operable curtain made of free-hanging fabric slats

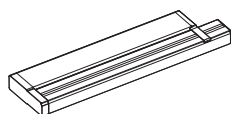
Operation



- **Chain/cord** optionally left or right.
180° turning through plastic ball chain (Ø4.5 x 6.0 mm)
Plastic balls on polyester cord (Ø1.4 mm) in grey, white, brown or black.
Movement by pull cord (Ø2.1 mm) made of polyester in grey, white, brown or black.
Operating length: can be freely selected (taking into account child safety in accordance with EN 13120:2014-09).
Fixing: Operating chain/operating cord secured by chain/cord security in transparent. (S. 06)
Package: optionally left, right, centre or split.



- **Traveller wand** optionally left or right.
(reinforced traveller wand gearbox)
180° turning and movement by an aluminium operating rod (max. length 1.50 m)
in anodised, white and black.
Operating length: freely selectable up to max. 1.50 m.
Package: left or right (depending on operation)



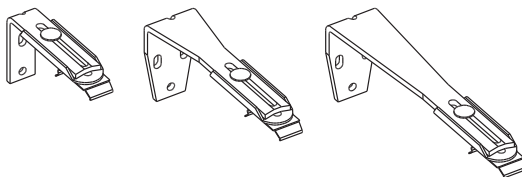
- **Motor operation**
The IQ3-Motor serves to move the louvres sideways and to tilt them.
It is fitted with 4 functions.
Open the hanging, close the hanging, tilt the louvres left and tilt the louvres right.
There are 2 additional functions (decor position and intermediate stop) and 3 speed settings.
These functions are controlled by an operating button.
The IQ3-Motor is optionally available with an RTS module for controlling a drive using a Somfy RTS radio transmitter.
The motor can be installed using a variety of fasteners behind the track to the left, behind the track to the right, above the track to the left, or above the track to the right.
Colour: powder-coated in white structure (RAL 9016), grey structure (RAL 7040), black structure (RAL 9005) and anthracite structure (RAL 7016).
Further information can be obtained from **Electrical planning IQ3-Motor**.

Mounting/Info

- **Bracket for ceiling mounting** in V2A, white and black



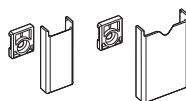
- **Bracket for wall mounting** galvanised, white, brown and black
Adjustable spacing dimensions: 60-108 mm, 108-156 mm and 156-204 mm



- **Ceiling bracket with screw** anodised or white powder-coated (aluminium)
For mounting the top track on suspended or soft ceilings



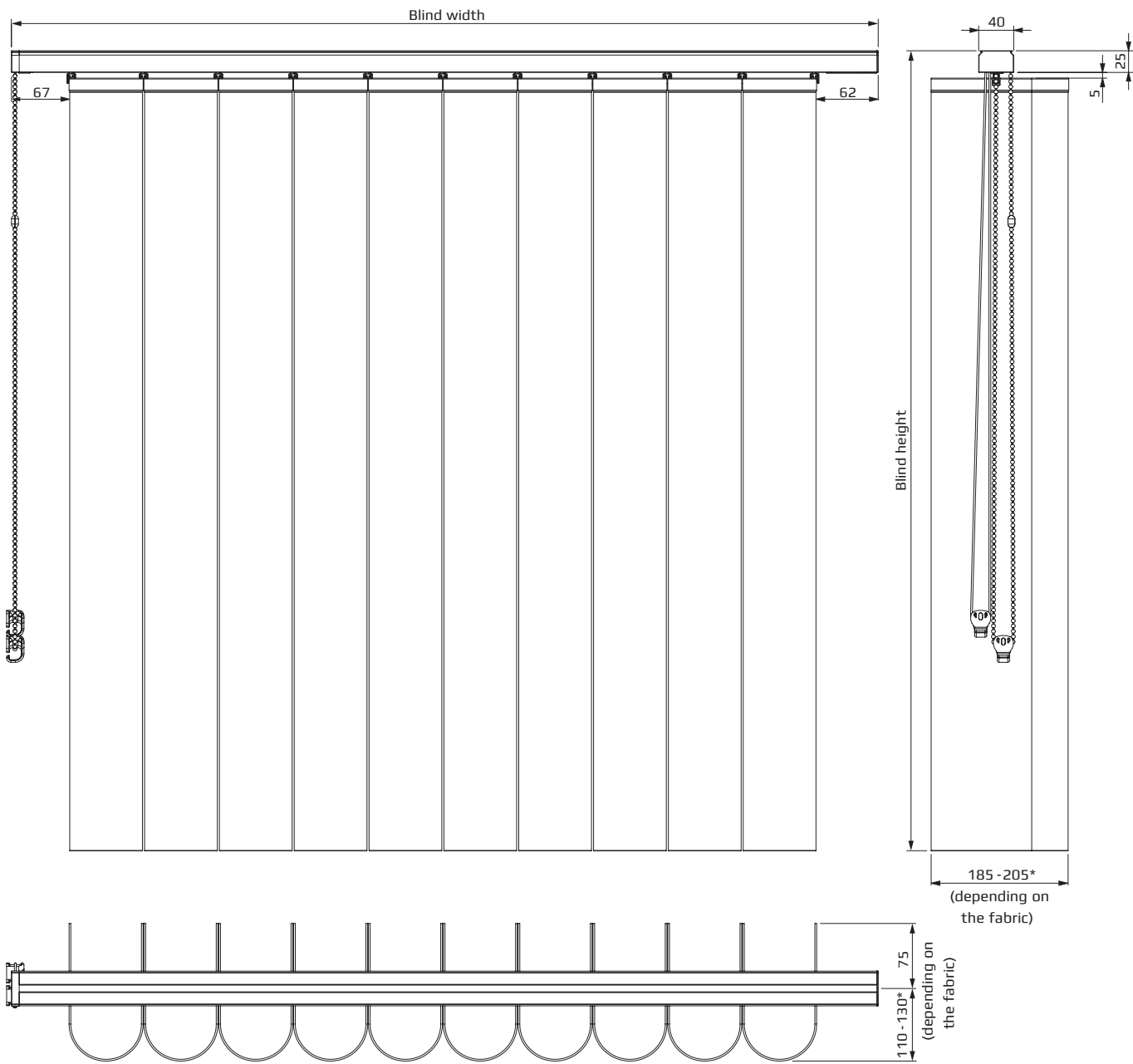
- **Cap for wall bracket** grey, white, brown and black (plastic)



- **Chain safety device/cord safety** device clear or white (plastic)
for securing and fixing the operating chain/cord

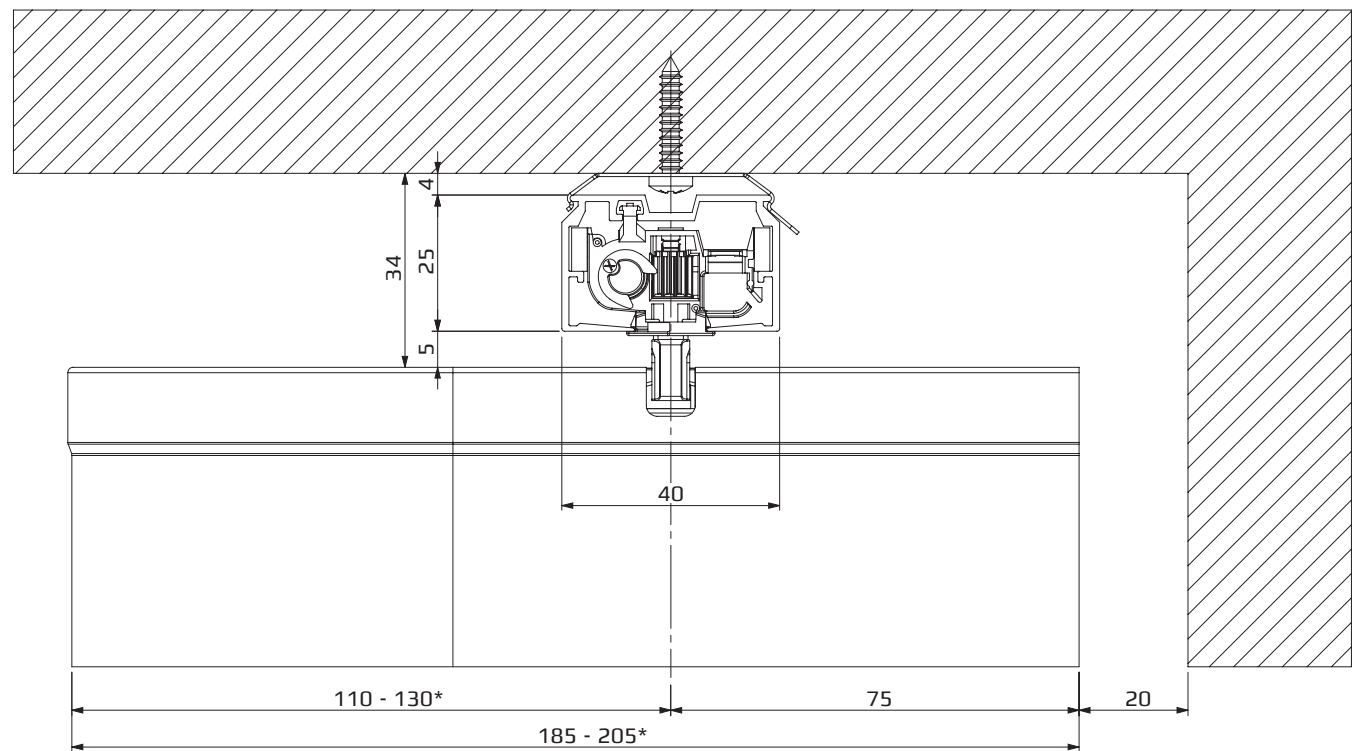


DS010 - Operable curtain made of free-hanging fabric slats

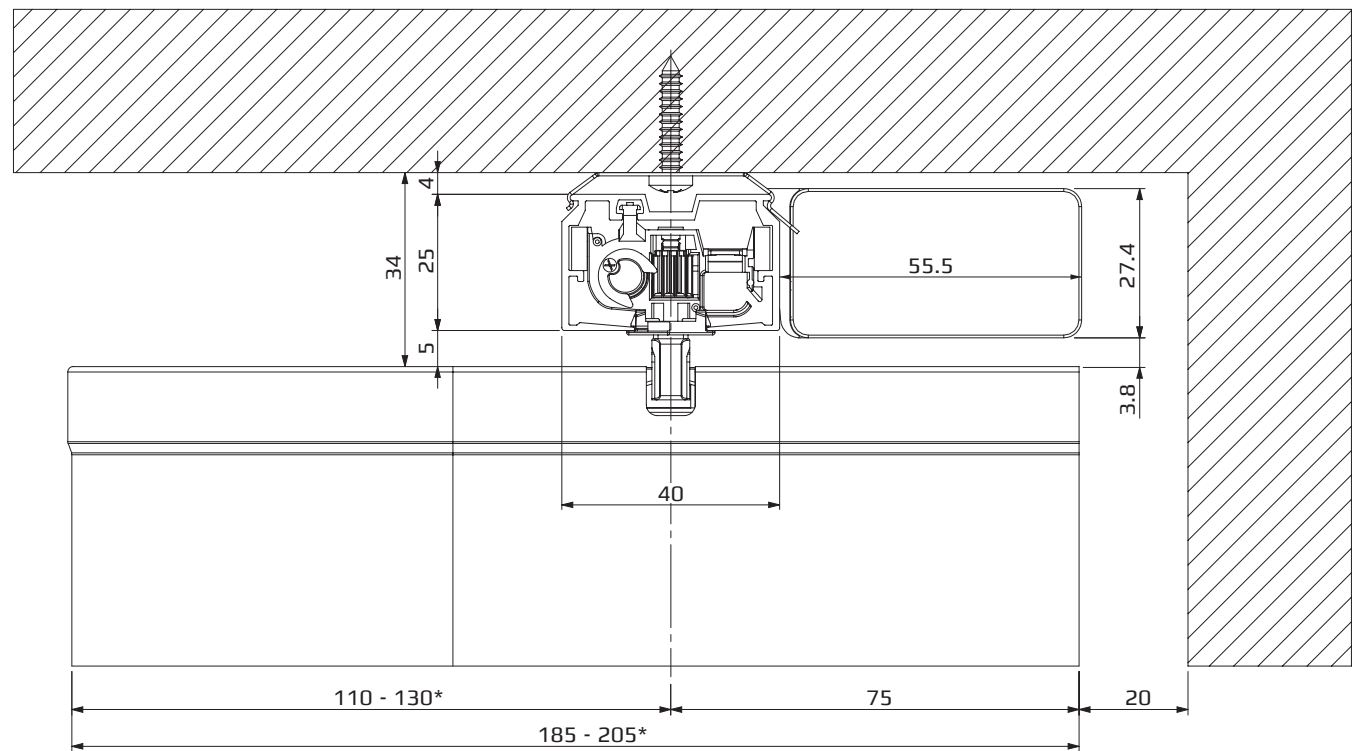


* in a package

DS010 - Operable curtain made of free-hanging fabric slats



* in a package



* in a package

All types operated with: Chain/Cord

The operation chain/operation cord must be **fixed with the included safety device!**

The operation length is in compliance with the Child Safety freely selectable

Mounting height is **known**:

-> max. operation length = mounting height - 1.50 m

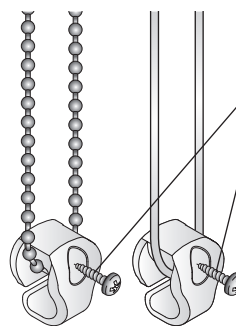
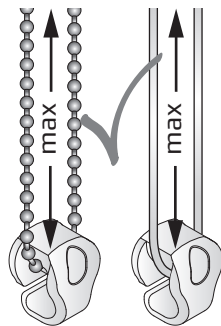
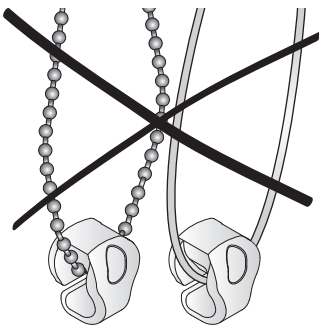
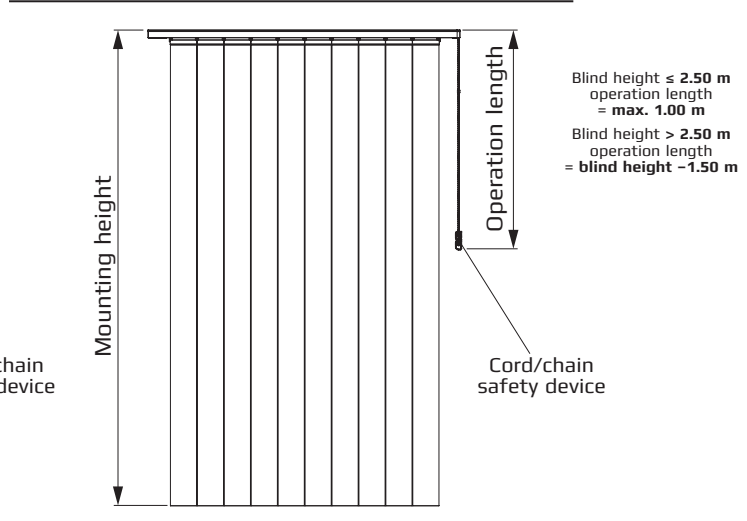
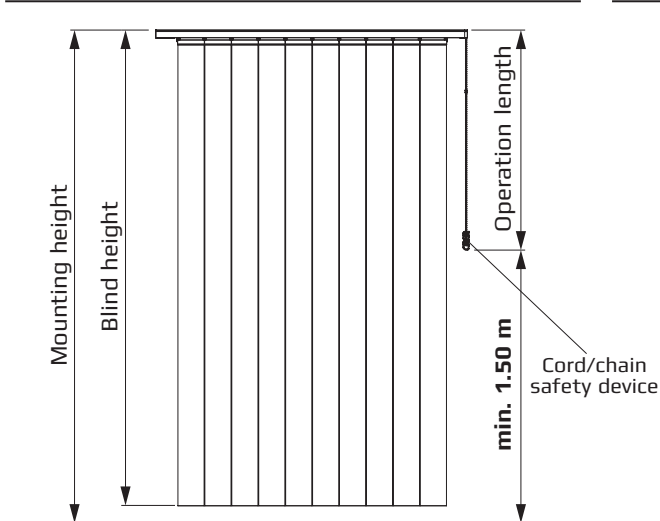
Mounting height is **unknown**:

Blind height ≤ 2.50 m -> max. operation length = 1.00 m

Blind height > 2.50 m -> max. operation length = blind height - 1.50 m

Mounting height is **known**

Mounting height is **unknown**



BENTHIN®

Benthin GmbH

Osterstader Str. 16
D-27572 Bremerhaven

T +49 471 79 84 0
E info@benthin.com

www.benthin.com