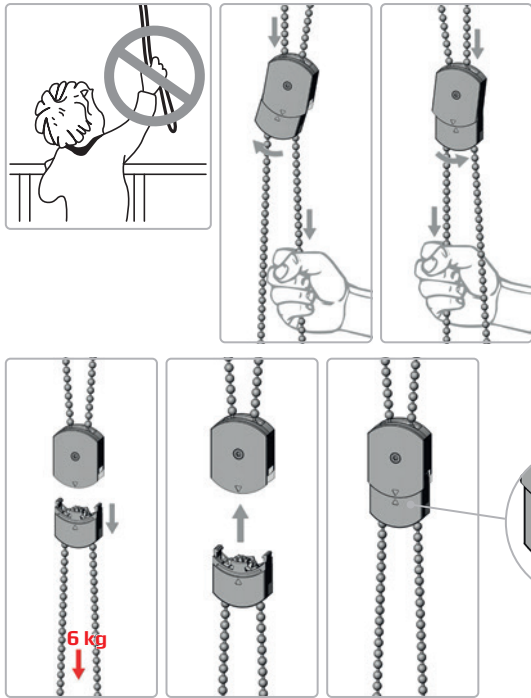


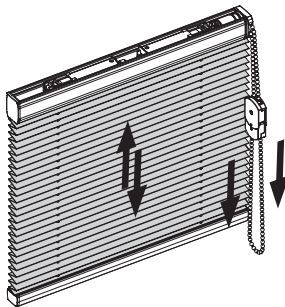
Operation

Child Safety Model P1800, P1805



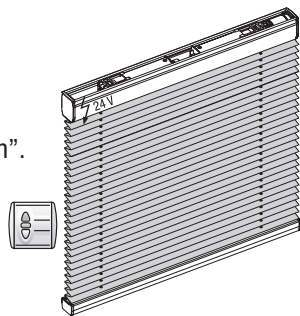
Operation Model P1800, P1805

Pleated blind with a chain drive, the blind is closed or opened by pulling the front or rear chain respectively.



Operation Model P1900, P1905

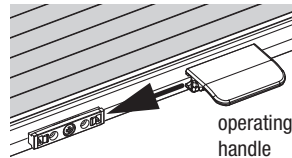
Pleated blinds with motorised operation. Please note the installation instructions "Electrical installation".



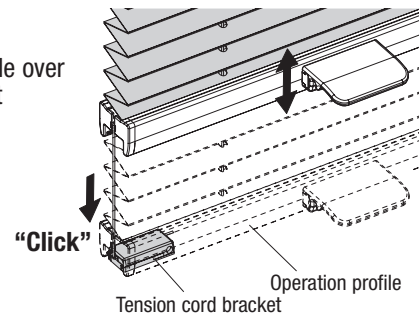
Operation

Operation Model P1600, P1620

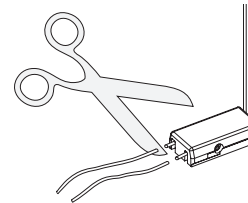
Tensioned pleated blind is closed and opened by moving the operating handle.



Locking
Click the operation profile over the tension cord bracket



After having checked that the pleated blind functions as prescribed, the excess cord ends can be cut off.



Attention: Adjustment of the cord tension must be uniform and may only be made by a professional.

Care

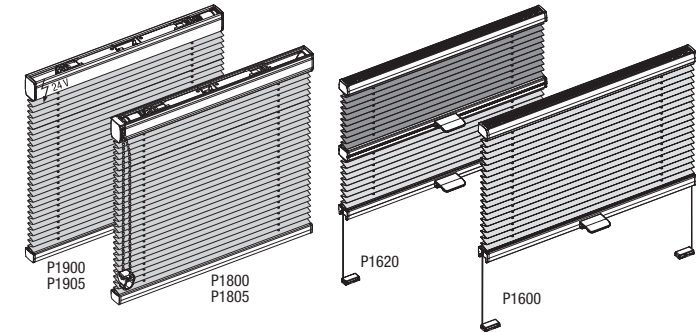
Thanks to a special manufacturing process, our fabric qualities are furnished with an antistatic finish and are therefore resistant to dust and dirt. Occasional brushing with a soft brush or a feather duster is usually sufficient.

When cleaning glass and the window frame, make sure that no water or caustic cleaning agents come into contact with the pleated blind fabric.

No guarantee can be offered for damage to fabrics that is attributable to condensate, cleaning agents or soiling by insects.

Installation – Operation – Care

Model P1800, P1805, P1900, P1905, P1600, P1620



Dear Customer,

this dimensionally accurate blind was produced especially according to your requirements. High quality materials and a design that is perfect in function and elegance guarantee a long service lifetime and thus ensure great pleasure in the purchased product.

Your blind Manufacturer

Please read this instructions carefully before fitting the blind.

Blinds must be fitted by skilled personnel. Wrong installation may result in accidents.

Alterations of the blind must be approved by the blind manufacturer.

No screws for fixing are enclosed. Always use appropriate screws and plugs suited for the wall or ceiling material where the blind is fitted!

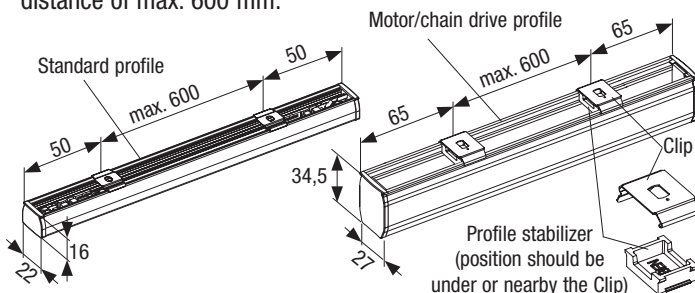
WARNING

- Young children can strangle in the loop of pull cords, tapes and cords that operate window coverings. They can also wrap cords around their necks.
- To avoid strangulation and entanglement, keep cords out of reach of young children.
- Move beds, cots and furniture away from window covering cords.
- Do not tie cords together. Make sure cords do not twist and create a loop.
- Install and use the included safety devices according to the installation instructions on these device to reduce possibility of such an accident.



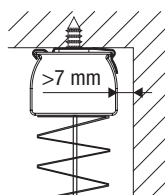
Clip mounting

Mount the clips 50 mm (standard profile) and 65 mm (motor / chain profile) respectively from the end of the headrail, and with a distance of max. 600 mm.



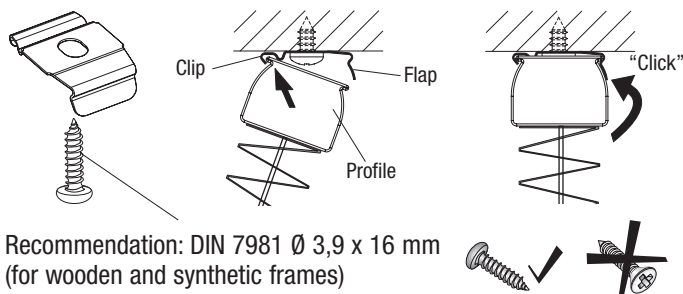
All dimensions in millimetre!

Attention: It is recommended to mount the clip with the flap forward (into the room). The clip can **only** be mounted with the flap toward the window or the pane respectively, in case the distance to the rail is **min. 7 mm**.



Ceiling mounting with Clip

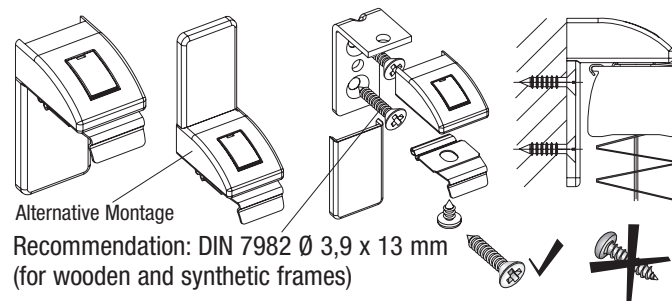
Place the profile in the back edge of the clip and push the front of the profile upwards (till it clicks in).



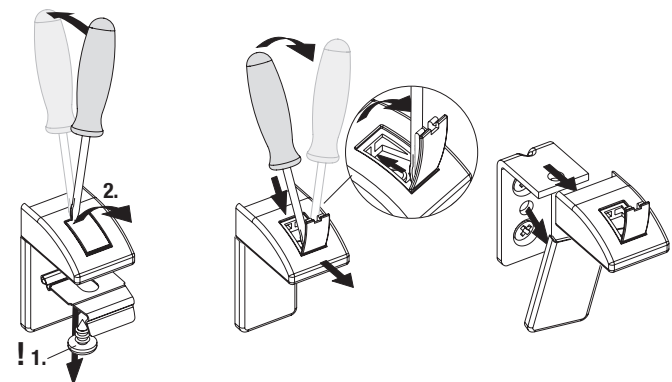
When **dismounting**, push the flap of the clip upwards to be able to take the profile out of the clip.

Mounting possibilities

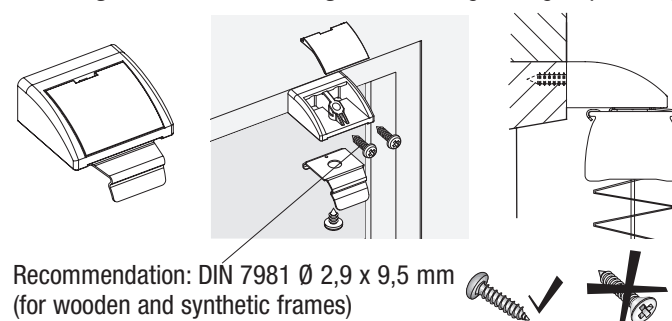
Wall installation with mounting bracket and clip



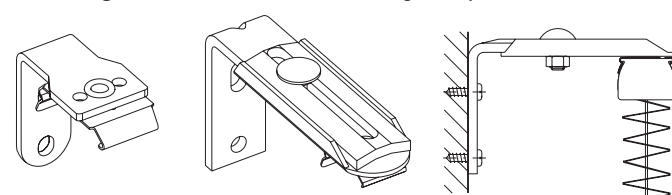
Dismantle mounting bracket



Installing the window moulding with moulding locking strip and clip



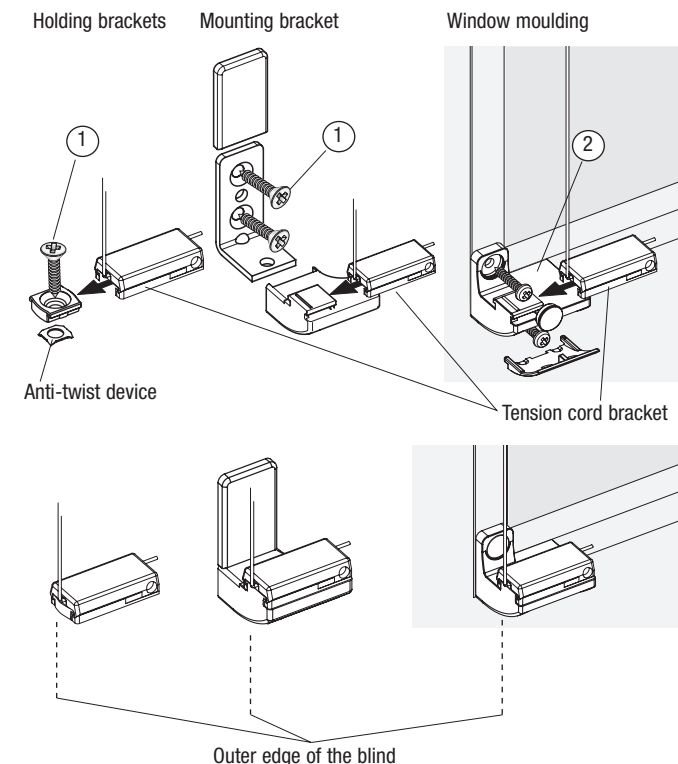
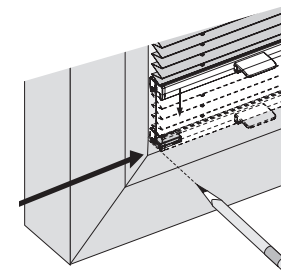
Mounting window frames with holding clamps



Mounting possibilities

Mounting of tension cord bracket

Let down the blind and mark the position for the clamping shoe (always the outer edge of the blind). Screw on holding brackets, mounting bracket or window moulding. Pull out and extend the tension cord bracket.



- ① Recommendation: DIN 7982 Ø 3,9 x 13 mm (for wooden and synthetic frames)
- ② Recommendation: DIN 7981 Ø 2,9 x 9,5 mm (for wooden and synthetic frames)
Max. length of the screw = window moulding depth!

For **fixing plates** use **mounting template (green)** see separate sheet.

