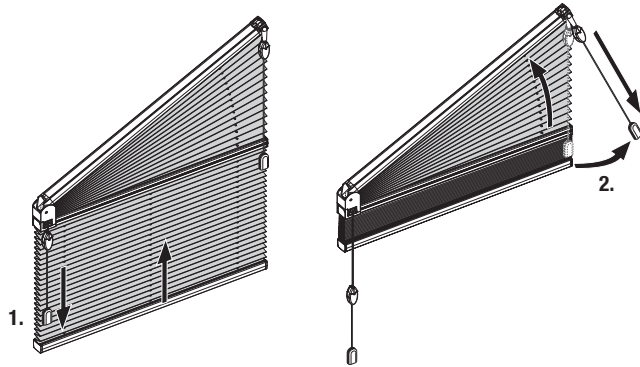


Operation

Operation Model P1751

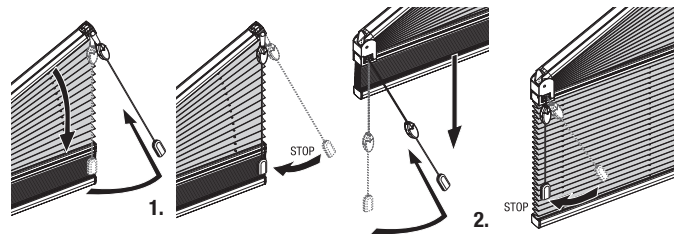
To open the blind:

1. Bottom: Pull the cord on the tassel straight downwards.
2. Top: Pull the cord by the tassel inwards (lock released) and pull the blind upwards.
To stop the blind pull the cord vertically (cord is locked).



To close the blind:

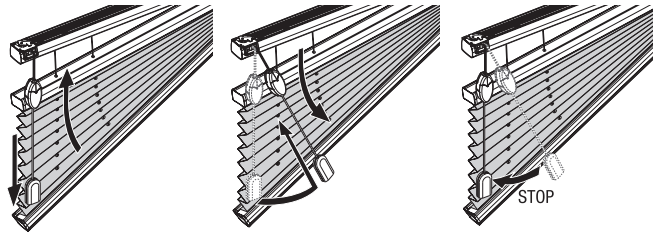
1. Top: Pull the cord by the tassel inwards (lock released) and lower the blind.
To stop the blind pull the cord vertically (cord is locked).
2. Bottom: Pull the cord by the tassel towards the centre of the blind and lower the blind.
To stop the blind pull the cord vertically (cord is locked).



Operation

Operation Model P1741

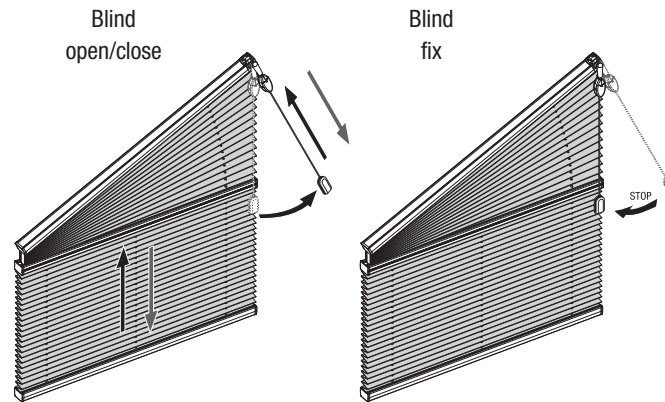
To open the blind: Pull the cord on the tassel straight downwards. To close the blind: Pull the tassel to the middle of the blind and lead the cord upwards.



Operation Model P1740/P1753

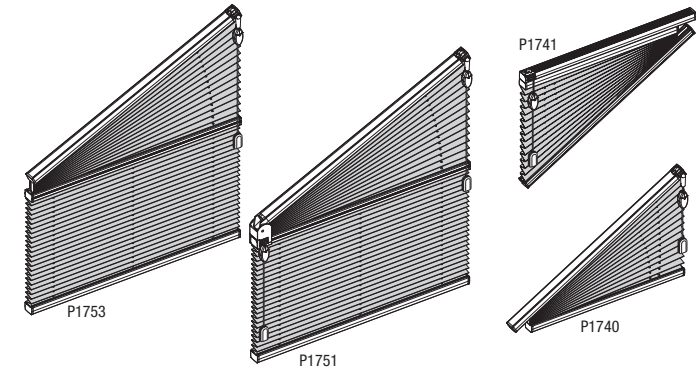
To open and close the blind, pull the cord by the tassel inwards (lock released) and pull the blind upwards or lower it.

To stop the blind pull the cord vertically (cord is locked).



Installation – Operation – Care

Model P1753, P1751, P1741, P1740



Dear Customer,

this dimensionally accurate blind was produced especially according to your requirements. High quality materials and a design that is perfect in function and elegance guarantee a long service lifetime and thus ensure great pleasure in the purchased product.

Your blind Manufacturer



Please read this instructions carefully before fitting the blind.



Blinds must be fitted by skilled personnel. Wrong installation may result in accidents.

Alterations of the blind must be approved by the blind manufacturer.

No screws for fixing are enclosed. Always use appropriate screws and plugs suited for the wall or ceiling material where the blind is fitted!



WARNING



- Young children can strangle in the loop of pull cords, tapes and cords that operate window coverings. They can also wrap cords around their necks.
- To avoid strangulation and entanglement, keep cords out of reach of young children.
- Move beds, cots and furniture away from window covering cords.
- Do not tie cords together.
Make sure cords do not twist and create a loop.
- Install and use the included safety devices according to the installation instructions on these device to reduce possibility of such an accident.



According to EN 13120

Care

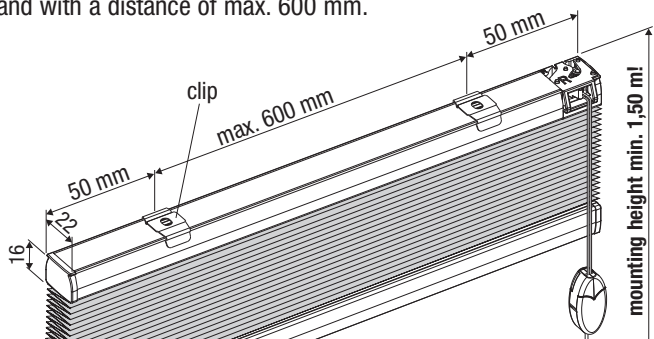
Thanks to a special manufacturing process, our fabric qualities are furnished with an antistatic finish and are therefore resistant to dust and dirt. Occasional brushing with a soft brush or a feather duster is usually sufficient.

When cleaning glass and the window frame, make sure that no water or caustic cleaning agents come into contact with the pleated blind fabric.

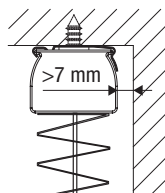
No guarantee can be offered for damage to fabrics that is attributable to condensation, cleaning agents or soiling by insects.

Mounting

Mount the clips 50 mm respectively from the end of the headrail, and with a distance of max. 600 mm.

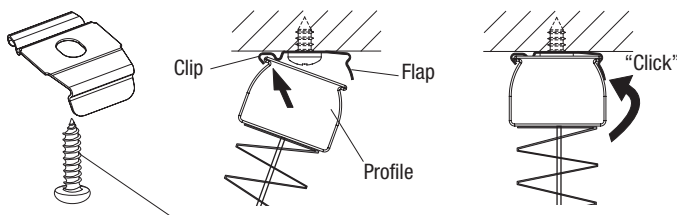


Attention: It is recommended to mount the clip with the flap forward (into the room). The clip can **only** be mounted with the flap toward the window or the pane respectively, in case the distance to the rail is **min. 7 mm**.



Ceiling mounting with Clip

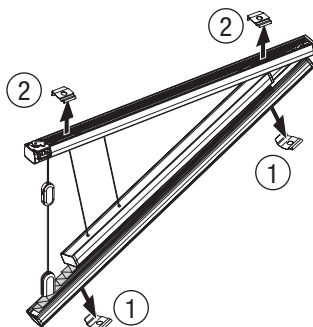
Place the profile in the back edge of the clip and push the front of the profile upwards (till it clicks in).



Recommendation: DIN 7981 Ø 3,9 x 16 mm (for wooden and synthetic frames)

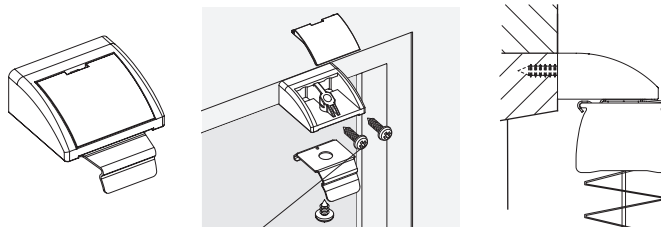
When **dismounting**, push the flap of the clip upwards to be able to take the profile out of the clip.

Attention: Model P1741
Mount the sloping bottom profile (1) and then the horizontal top profile (2).



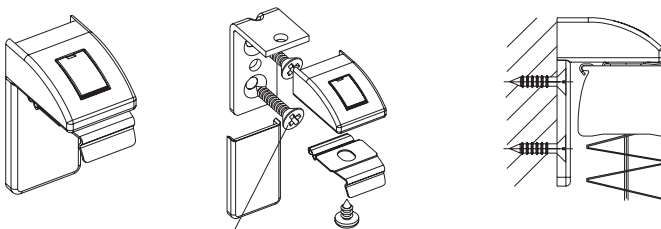
Mounting

Installing the window moulding with moulding locking strip and clip



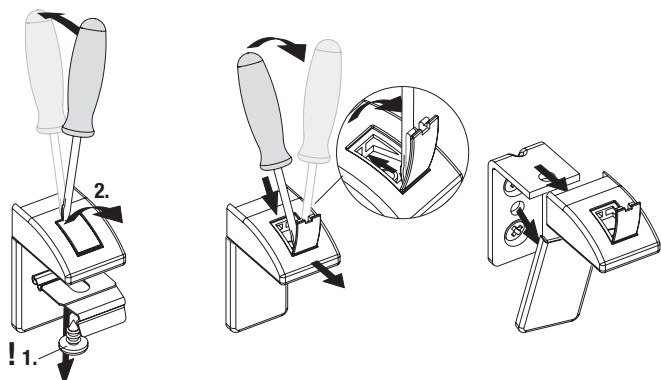
Recommendation: DIN 7981 Ø 2,9 x 9,5 mm (for wooden and synthetic frames)

Wall installation with mounting bracket and clip

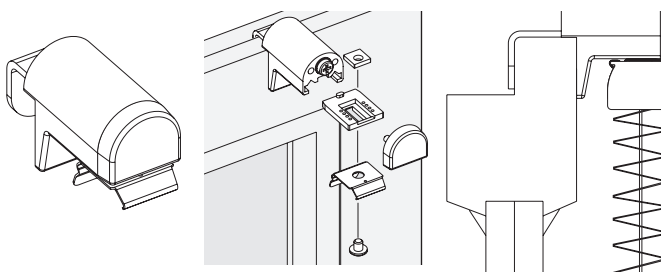


Recommendation: DIN 7982 Ø 3,9 x 13 mm (for wooden and synthetic frames)

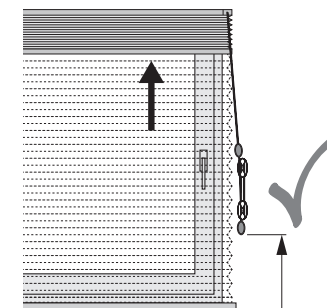
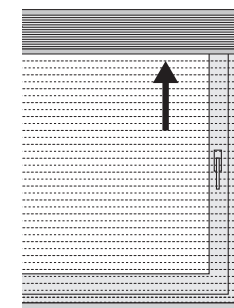
Dismantle mounting bracket



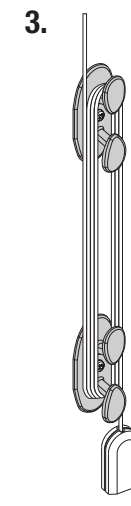
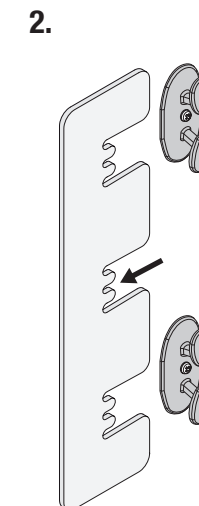
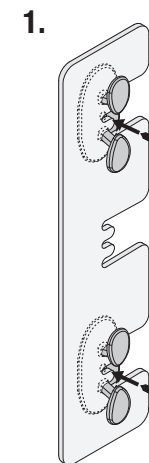
Mounting window frames with holding clamps



Child Safety



min. 1,50 m!



Recommendation: DIN 7981 Ø 3,9 x 13 mm (for wooden and synthetic frames)