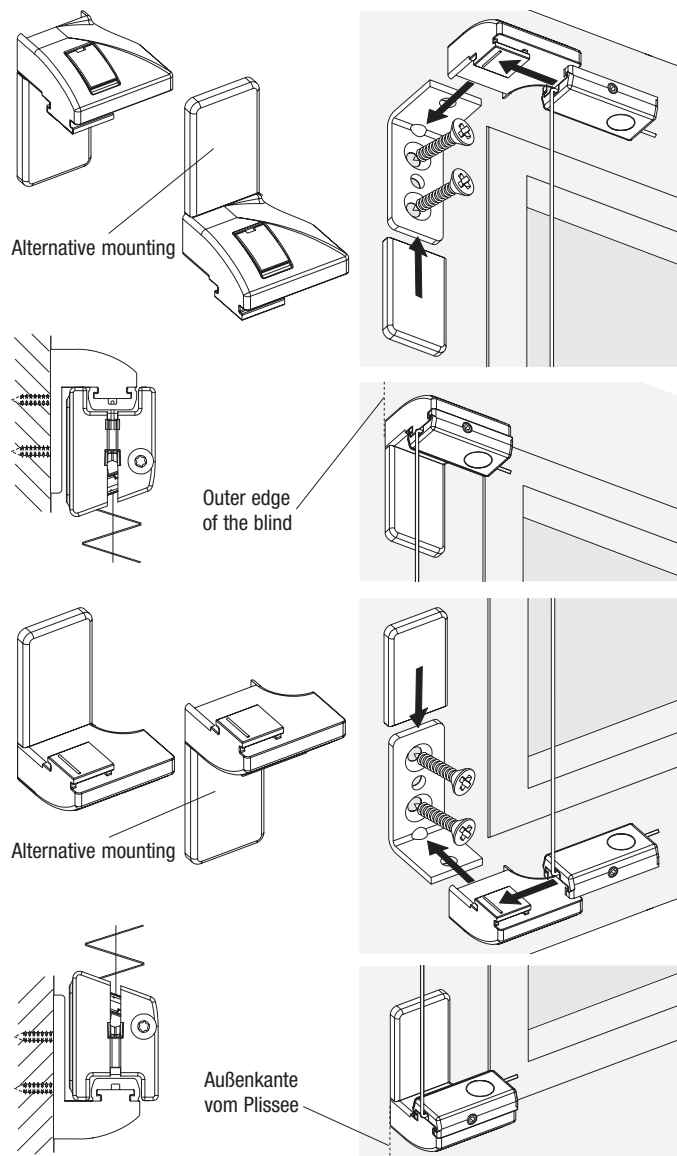


## Mounting possibilities

### Wall fastener / window fastener with mounting bracket

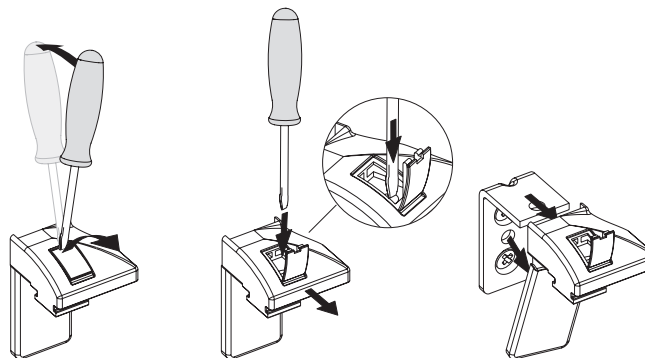


**Recommendation: DIN 7982 Ø 3.9 x 13 mm**  
(for wooden and synthetic frames)



## Mounting possibilities

### Dismantle mounting bracket



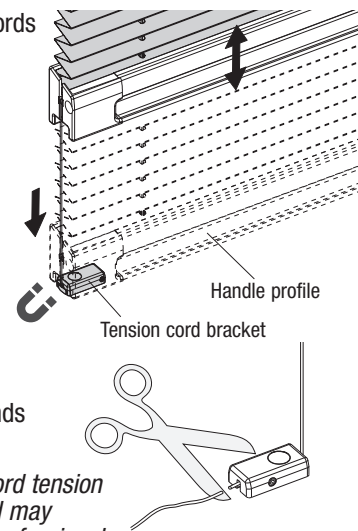
## Operation

Pleated blind with stretched cords  
are operated by use of the  
handle profile.

**Locking**  
Click the handle profile over  
the tension cord bracket  
via magnet.

**After** having checked that the  
pleated blind functions as  
prescribed, the excess cord ends  
can be cut off.

**Attention:** Adjustment of the cord tension  
must be uniform and may  
only be made by a professional.



## Care

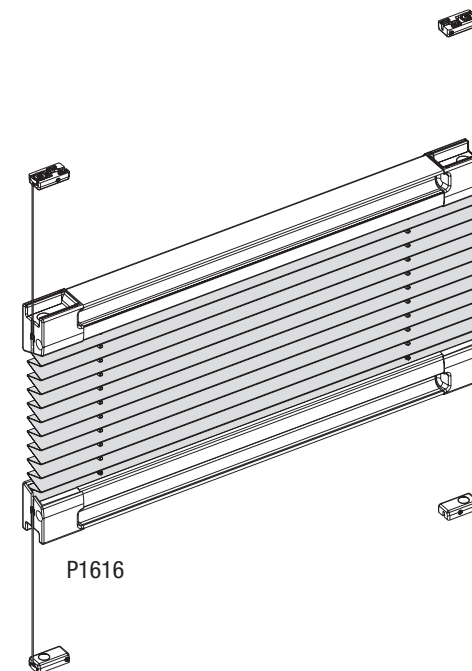
Thanks to a special manufacturing process, our fabric qualities are  
furnished with an antistatic finish and are therefore resistant to  
dust and dirt. Occasional brushing with a soft brush or a feather  
duster is usually sufficient.

When cleaning glass and the window frame, make sure that no  
water or caustic cleaning agents come into contact with the  
pleated blind fabric.

No guarantee can be offered for damage to fabrics that is  
attributable to condensate, cleaning agents or soiling by insects.

## Installation – Operation – Care

### Model Typ P1616



### Dear Customer,

this dimensionally accurate pleated blind was produced especially  
according to your requirements. High quality materials and a design that is  
perfect in function and elegance guarantee a long service lifetime and thus  
ensure great pleasure in the purchased product.

Your pleated blind Manufacturer



**Please read this instructions carefully  
before fitting the blind**



Blinds must be fitted by skilled personnel.

Wrong installation may result in accidents.

Alterations of the blind must be approved by the blind manufacturer.

No screws for fixing are enclosed.

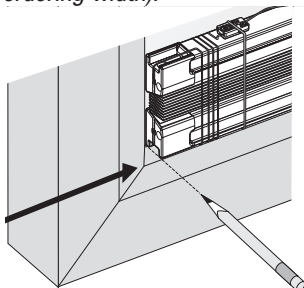
Always use appropriate screws and plugs suited for the wall or ceiling  
material where the blind is fitted!

## Mounting of the tension cord bracket

### Information to all mounting types:

Determination and marking of the position for the clamping shoe (always the outer edge of the blind = ordering width).

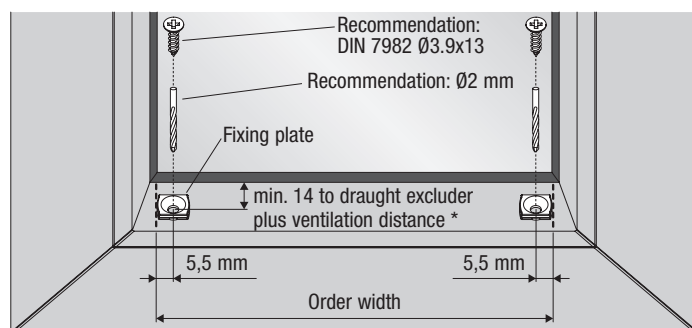
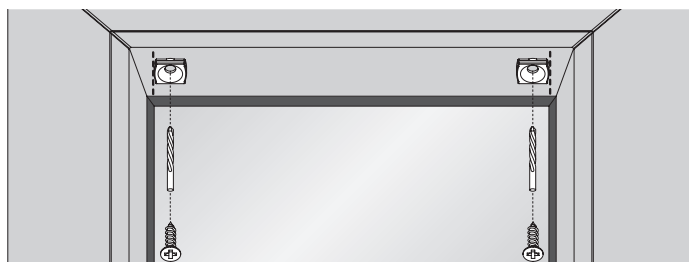
The ordered width is easy to find by placing the pleated blind in the window frame and marking the ends.



### Mounting glass border with fixing plates



After marking the ordering width as described above, mount the holding brackets on top and at the bottom according to the illustration.



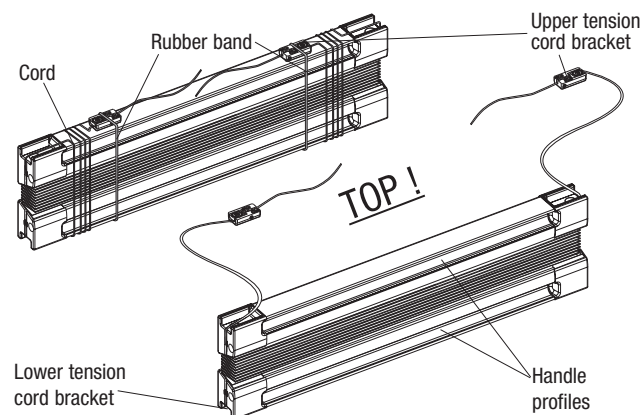
### Attention:

In order to avoid any glass damage, a minimum distance to the pane has to be kept!

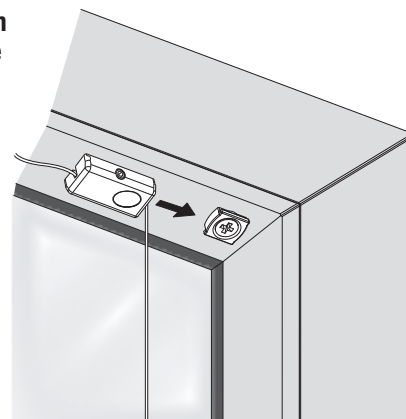
Recommendation: Transparent fabric min. 3 mm ventilation distance.  
Blackout fabric min. 5 mm ventilation distance.  
Honeycomb fabric min. 20 mm ventilation distance.  
(Special glass may according to instructions from the manufacturer require bigger distance).

## Mounting of the tension cord bracket

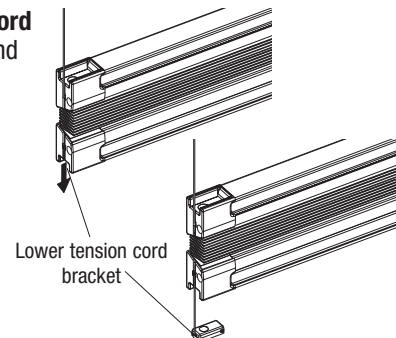
Remove rubber band and unwind the cord incl. tension cord bracket.



Push the **upper tension cord brackets** over the fixing plates until they lock.

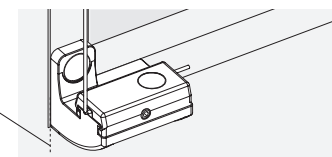
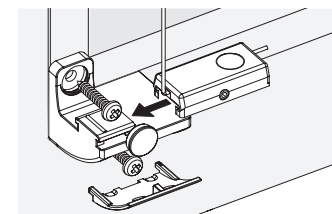
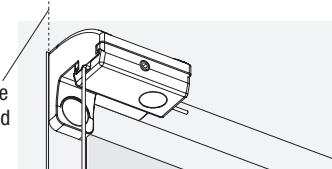
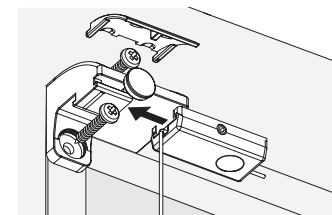
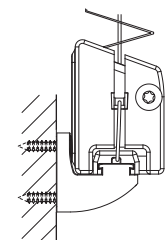
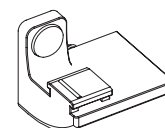
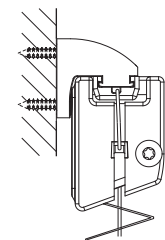
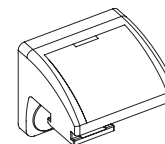


Take the **lower tension cord brackets** out of the rail and push them over the fixing plates until they lock.



## Mounting possibilities

### Installing the window moulding with moulding locking strip



Recommendation: DIN 7981 Ø 2.9 x 9.5 mm (for wooden and synthetic frames)  
Max. length of the screw = window moulding depth!

